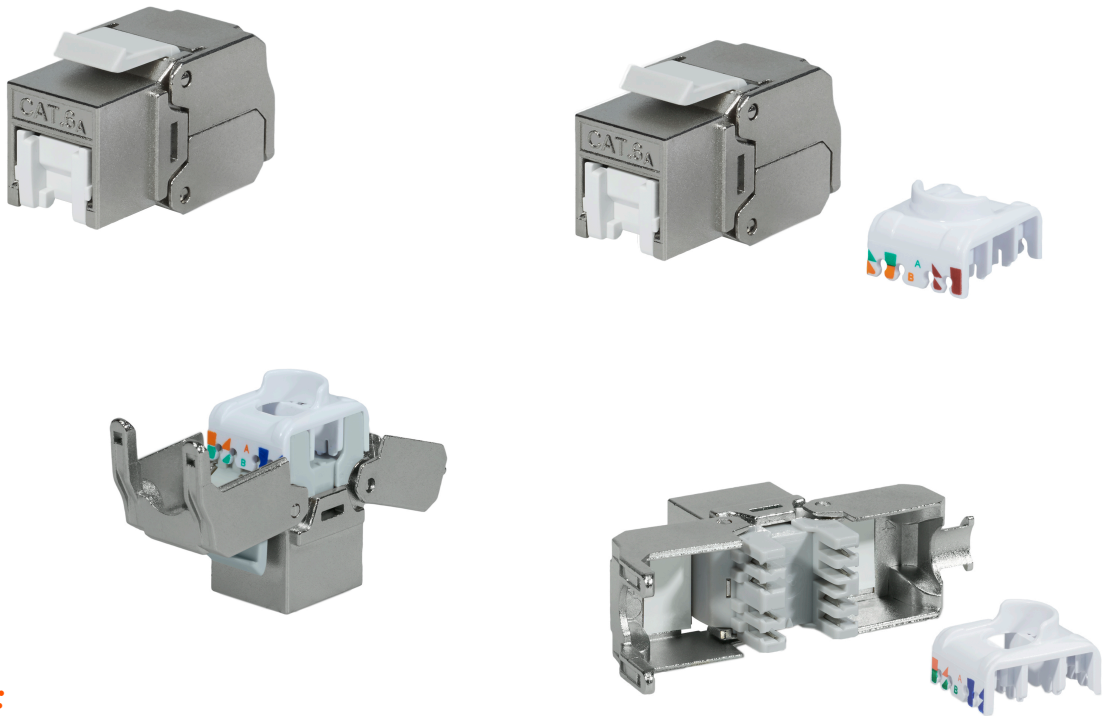


FEATURES:

- Conform to TIA/EIA-568C.2, ISO/IEC 11801 AMD2:2010-04, ISO/IEC 60603-7-51 and EN 50173-1 Class E_A specifications
- Die-casting design for optimal EMI protection
- Slim size is ideal for interfaces where the spaces are tight
- ISO/IEC 11801 and EN 50173 short link performance guaranteed
- Multi-nodes consolidation cord, reliable end to end solution & high data traffic
- RoHS compliant



APPLICATIONS:

- 10GBASE-T Ethernet
- 1000BASE-TX Gigabit Ethernet
- 1000BASE-T Gigabit Ethernet 100BASE-TX Fast Ethernet. 10BASE-T Ethernet
- Voice, Video and other applications.

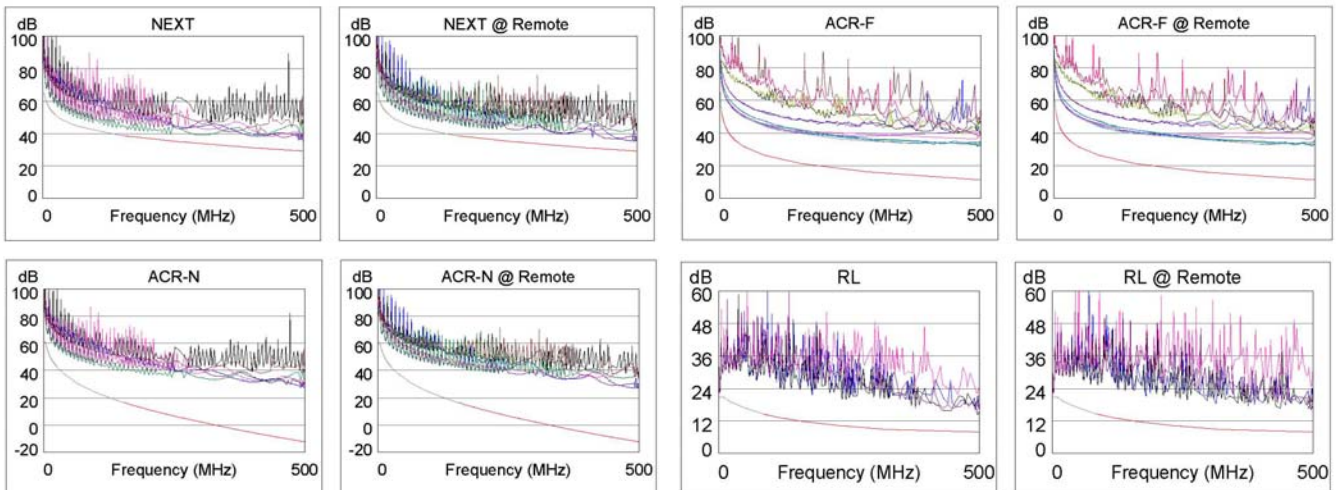
Product Specification

CHARACTERISTICS:

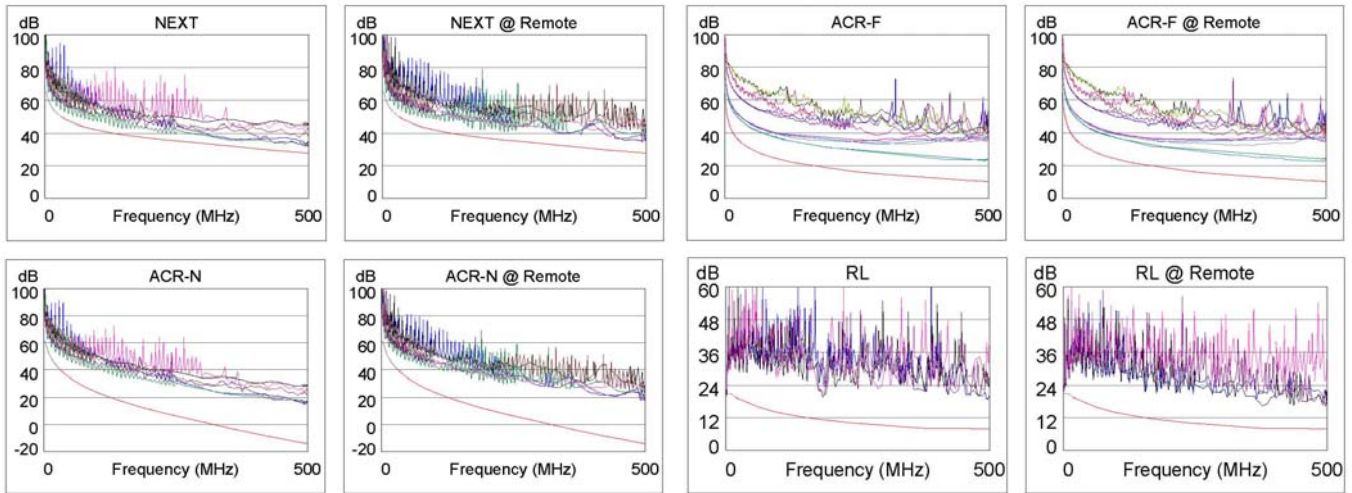
Dielectric Strength	1000V RMS for 1min
Current Rating	1.5Amp Max.
Insulation Resistance	10MΩ Min.
Contact Resistance	2mΩ per contact
Temperature Range	-10°C to 60°C
Humidity Admissible	10%~90%; non condensing
Conductor Body	22AWG ~ 26AWG insulation wire
Material	Housing: PC Body: Zinc Die-casting
Jack contact	Phosphor bronze, 50μ inch gold plated over nickel plated in contact area
IDC Contacts	Operating life: Minimum 750 insertions 100μ inch nickel plated over phosphor bronze Operating life: Minimum 250 Re-terminations

TYPICAL PERFORMANCE:

EN50173 PL2 Class Ea



EN50173 PL3 Class Ea



ORDERING INFORMATION:

Part NO. GM-CAT6AFTPJSJ-TL_S

Description Giga-Maxx Cat6A 180° FTP Shielded Keystone Jack, Tool less with Shutter

LINKWARE
CABLE TEST MANAGEMENT SOFTWARE

Wire Map (T568B)

1-2, 3-6, 4-5, 7-8

Test Summary: PASS

Model: DTX-1800
Main S/N: 1019217
Remote S/N: 1019218
Main Adapter: DTX-CHA001
Remote Adapter: DTX-CHA001

Length (m), Limit 100.0 [Pair 45] 88.1 m

Prop. Delay (ns), Limit 555 [Pair 12] 439

Delay Skew (ns), Limit 50 [Pair 12] 8

Resistance (ohms) [Pair 12] 15.4

Worst Case Margin		Worst Case Value		
PASS	MAIN	SR	MAIN	SR
Worst Pair	12.36	36.45	12.36	36.45
NEXT (dB)	8.2	7.9	8.5	8.0
Freq. (MHz)	367.0	449.0	458.0	499.0
Limit (dB)	29.7	27.4	27.1	26.1
Worst Pair	36	36	36	36
PS NEXT (dB)	8.2	8.6	8.2	8.6
Freq. (MHz)	453.0	449.0	453.0	464.0
Limit (dB)	24.4	24.5	24.4	24.1

Worst Case Margin		Worst Case Value		
PASS	MAIN	SR	MAIN	SR
Worst Pair	45.36	36.45	45.36	36.45
ACR-F (dB)	14.4	14.4	14.6	14.7
Freq. (MHz)	3.6	3.6	500.0	500.0
Limit (dB)	52.1	52.1	9.3	9.3
Worst Pair	36	36	36	36
PS ACR-F (dB)	14.4	14.7	16.7	17.0
Freq. (MHz)	1.0	1.0	500.0	500.0
Limit (dB)	60.3	60.3	6.3	6.3

Worst Case Margin		Worst Case Value		
PASS	MAIN	SR	MAIN	SR
Worst Pair	16.5	16.9	16.5	16.7
ACR-N (dB)	101.5	449.0	500.0	499.0
Freq. (MHz)	18.8	-19.1	-23.2	-23.1
Worst Pair	36	36	36	36
PS ACR-N (dB)	16.5	17.0	19.1	18.2
Freq. (MHz)	368.0	464.0	500.0	499.0
Limit (dB)	-15.0	-23.2	-26.1	-26.0

Worst Case Margin		Worst Case Value		
PASS	MAIN	SR	MAIN	SR
Worst Pair	36	45	36	45
RL (dB)	5.1	4.1	7.8	7.0
Freq. (MHz)	2.9	2.9	499.0	499.0
Limit (dB)	19.0	19.0	6.0	6.0

Compliant Network Standards:

10BASE-T	100BASE-TX	100BASE-T4
100BASE-T	100BASE-T	ATM-25
ATM-51	ATM-155	100V-AryLan
TR-4	TR-16 Active	TR-16 Passive

LINKWARE
CABLE TEST MANAGEMENT SOFTWARE

Wire Map (T568B)

1-2, 3-6, 4-5, 7-8

Test Summary: PASS

Model: DTX-1800
Main S/N: 1019217
Remote S/N: 1019218
Main Adapter: DTX-PLA002
Remote Adapter: DTX-PLA002

Length (m), Limit 90.0 [Pair 45] 91.2 m

Prop. Delay (ns), Limit 498 [Pair 12] 420

Delay Skew (ns), Limit 44 [Pair 12] 9

Resistance (ohms) [Pair 12] 14.0

Worst Case Margin		Worst Case Value		
PASS	MAIN	SR	MAIN	SR
Worst Pair	36.45	36.45	36.45	36.45
NEXT (dB)	5.2	5.5	5.2	5.5
Freq. (MHz)	496.0	497.0	496.0	497.0
Limit (dB)	26.8	26.7	26.8	26.7
Worst Pair	36	36	36	36
PS NEXT (dB)	6.5	5.9	6.5	6.1
Freq. (MHz)	496.0	440.0	496.0	497.0
Limit (dB)	23.9	25.7	23.9	23.8

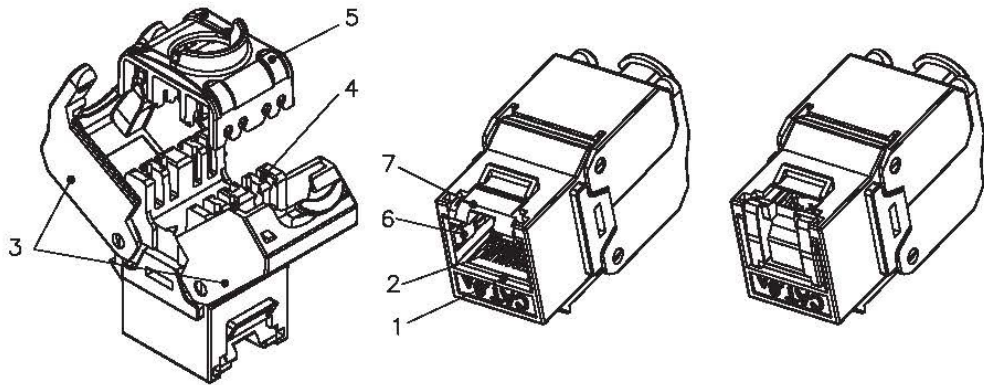
Worst Case Margin		Worst Case Value		
PASS	MAIN	SR	MAIN	SR
Worst Pair	45.36	36.45	45.36	36.45
ACR-F (dB)	14.2	14.6	14.2	14.6
Freq. (MHz)	492.0	492.0	492.0	492.0
Limit (dB)	10.4	10.4	10.4	10.4
Worst Pair	45	45	36	45
PS ACR-F (dB)	15.4	15.2	16.1	16.9
Freq. (MHz)	1.0	1.1	492.0	491.0
Limit (dB)	61.2	60.2	7.4	7.4

Worst Case Margin		Worst Case Value		
PASS	MAIN	SR	MAIN	SR
Worst Pair	36.45	36.45	36.45	36.45
ACR-N (dB)	9.5	9.6	9.5	9.6
Freq. (MHz)	496.0	458.0	496.0	497.0
Limit (dB)	-16.8	-13.7	-16.9	-16.9
Worst Pair	36	36	36	36
PS ACR-N (dB)	10.5	9.5	10.5	9.9
Freq. (MHz)	493.0	377.0	496.0	497.0
Limit (dB)	-19.4	-9.2	-19.7	-19.7

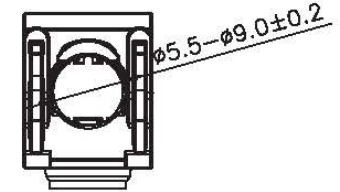
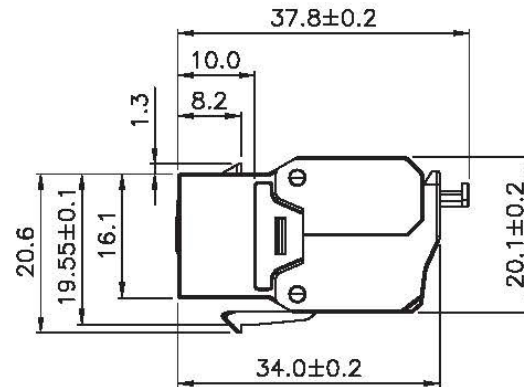
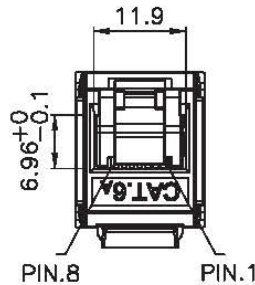
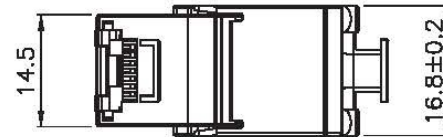
Worst Case Margin		Worst Case Value		
PASS	MAIN	SR	MAIN	SR
Worst Pair	78	45	12	45
RL (dB)	2.2	2.6	6.6	6.2
Freq. (MHz)	3.0	4.1	496.0	465.0
Limit (dB)	21.0	21.0	8.0	8.0

Compliant Network Standards:

10BASE-T	100BASE-TX	100BASE-T4
10BASE-T	100BASE-T	ATM-25
ATM-51	ATM-155	100V-AryLan
TR-4	TR-16 Active	TR-16 Passive



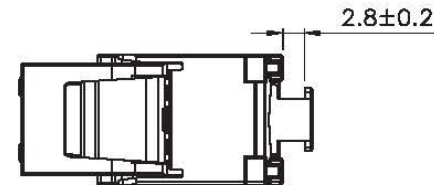
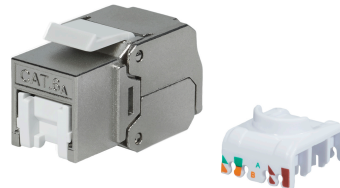
SCALE 1/1



Specification : Giga-Maxx Cat6A 180° FTP Shielded Keystone Jack, Tool less w Shutter

Material :

1. RJ45 Jack :
 - 1-1. Housing : Zinc die-casting with nickel plated.
 - 1-2. Contact Bracket : PC, UL 94-V2, transparent color.
2. RJ45 Jack Contact :
 - 2-1. Material : Phosphor bronze with nickel plated.
 - 2-2. Finish : 50 micro-inch gold plated on plug contact area.
3. Cap A&B : Zinc die-casting with nickel plated.
4. IDC :
 - 4-1. Housing : PC, grey color(RAL7035), UL 94-V2.
 - 4-2. Terminal : Phosphor bronze with tin plated.
5. Cap : PC, white color, UL 94-V2.
6. Clip : Stainless steel.
7. Shutter : ABS+PC, UL 94V-0, white color.
8. PCB : FR4, UL 94-V0.



Performance :

- a. T568A & T568B wiring.
- b. Insertion Force : 30N max. (IEC 60603-7-5).
- c. Retention Strength : 7.7 kg between jack and plug.
- d. Operating Temperature : -10°C to 60°C. (ISO/IEC 11801, ANSI/TIA 568 C.2).
- e. Life(mating cycles) :
 - e-1. Jack : 750 cycles min. (ISO/IEC 11801, IEC 60603-7-5).
 - e-2. IDC : Suitable for 23-26 AWG stranded and solid wire.
- f. The Cat.6A transmission performance is in compliance with the ANSI/TIA 568 C.2 standard.

GENERAL TOLERANCE OF DIMENSIONS X.XXX ±0.005 X.XX ±0.05 X.X ±0.1	DRAWING	LOVE	Giga-Maxx	
	CHECK	DAY		
	APPROVAL	FRANK		
	DATE	NAME	ITEM NO.: GM-CAT6AFTPJSJ-TL_S	
SCALE	1/1 (A4)	UNIT	mm	DES.: Giga-Maxx Cat6A 180° FTP Shielded Keystone Jack, Tool less w Shutter
DRAWING NO. AADBH0211604015		KJ88F-6A-FS-D(SA1)		SHEET 1 OF 1
DRAWING CLASSIFICATION		S		