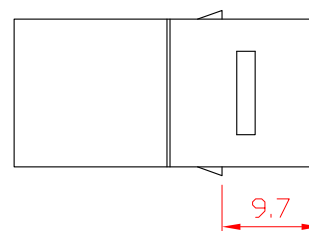
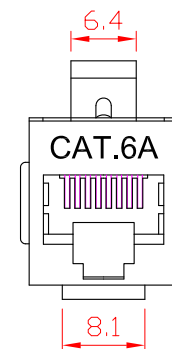
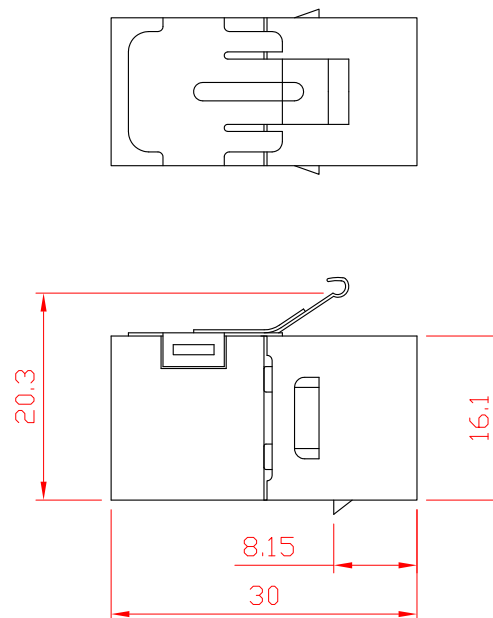
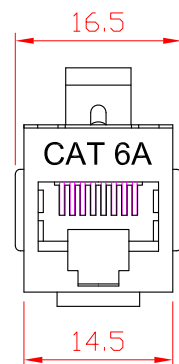




KJ6A-08
STP Cat.6a Keystone Jack
In-line coupler, RJ45-RJ45



NOTES:

ELECTRICAL:

1. VOLTAGE RATING: 125 VAC RMS
2. CURRENT RATING: 1.5 AMP
3. CONTACT RESISTANCE: 100 MILLIOHMS MAX
4. INSULATION RESISTANCE: 1000 MEGOHMS MIN @500 VDC
5. DIELECTRIC STRENGTH: 750 VAC RMS 60Hz, 1MIN

ENVIRONMENTAL:

1. STORAGE: -40° TO +85°
2. OPERATION: 0° TO 70°

MECHANICAL:

1. HOUSING MATERIAL: STAINLESS STEEL
2. INSERT MATERIAL: FAME RETARDANCY PBT
3. PCB MATERIAL: FR-4 T=1.6mm
4. CONTACT MATERIAL: PHOSPHOR BRONZE
STAMP PIN T=0.30mm
5. RJ45 JACK ;IFE: 750 TIMES MIN
6. SHIELD MATERIAL: STAINLESS STEEL,
T=0.2mm

					Giga-Maxx				
					Material			Item No.	GM-ICCat6A STP
					Angles Projection			DWG No.	KJ6A-08-00-00
					Size	Scale	Unit	Part Name	STP Cat.6A coupler, RJ45-RJ45
Drawn			2015.12.29	Tolerance			A4	X:1	mm
Checked	Ge pei jun	2015.12.29	0.00-20.00 ±0.10 20.00-50.00 ±0.15 50.00-100.00 ±0.20 100.00-Angle ±0.25 ±30°						
Approved	jimmy	2015.12.29			Sheet	1 OF 1	Version: A/0	Part No.	10200372