

Application

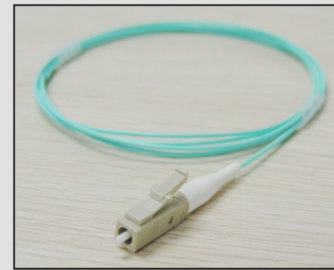
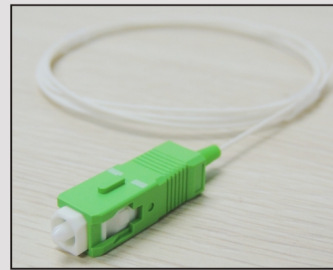
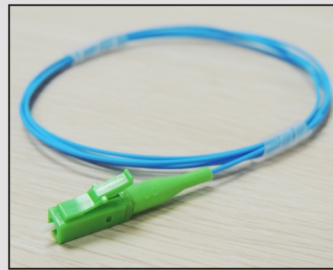
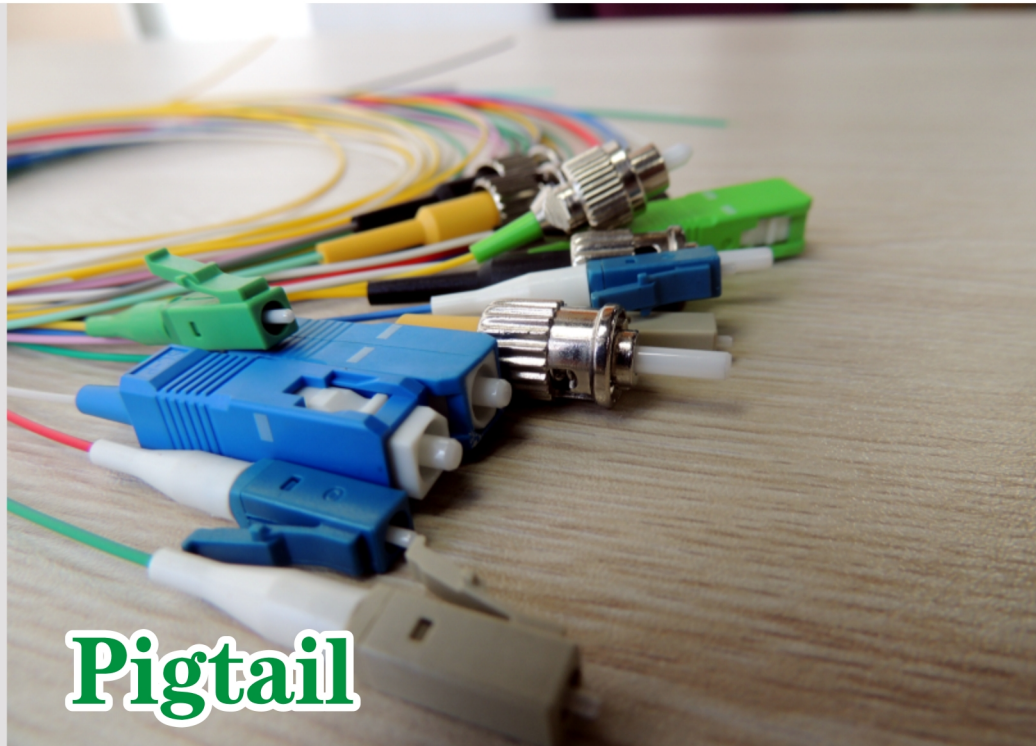
- Gigabit Ethernet
- Telecommunication Networks
- Active Device Termination
- Video
- Industrial
- Multimedia
- Military
- Premise Installations

Features

- High Temperature Stability
- Good Exchangeability
- Good Durability
- Low Insertion Loss
- High Back Reflection Loss
- Standard: Telcordia GR-326-CORE

Availability

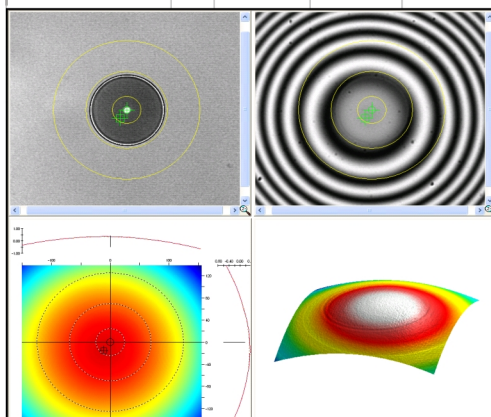
- PC&APC Pigtail Available
- Various Boot(cable)Size Available
- 12 standard color Pigtail Available
- Blister Packing Available



Jacket : LSZH, Flame retardant according to IEC 60332-1. Zero halogen, non corrosive gasses according to IEC60754-2 and RoHS Compliant

Measurement Parameter	Pass/Fail Limits		Measured Value	Passed or Failed
	Minimum	Maximum		
Radius of Curvature	10.00	25.00	20.54 mm	Pass
Fiber Height (Spherical Fit)	-50.0	50.0	41.4 nm	Pass
Fiber Height (Planar Fit)	-10.0	100.0	24.6 nm	
Apex Offset	0.00	50.00	12.80 Hm	Pass
Bearing			219.500 deg	
Angle	0.000	0.200	0.077 deg	
Tilt Offset			deg	
Actual Angle			deg	
Key Error			deg	
Fiber Roughness (Rq)	0	50	3 nm	Pass
Fiber Roughness (Ra)	0	50	2 nm	Pass
Ferrule Roughness (Rq)	0	50	3 nm	Pass
Ferrule Roughness (Ra)	0	50	2 nm	Pass
Diameter	123.0	135.0	126.7 Hm	Pass
Comments				

BLANK = NOT APPLICABLE OR NOT SELECTED



Insertion Loss	1310 nm	
	1550 nm	
Backreflection	1310 nm	
	1550 nm	
Sample ID:	03/09/2011	PASS

Specification

Item	Single Mode	Multimode
Insertion Loss	≤0.2dB	≤0.2dB
Return Loss	PC ≥ 45dB; UPC ≥ 55dB; APC ≥ 65dB	UPC ≥ 35dB
Repeatability	≤0.1dB	≤0.1dB
Durability	≤0.2dB typical change 1000matings	
Interchangeability	≤0.1dB	≤0.1dB
Operating Temperature	-40°C to +85°C	-40°C to +85°C