

# WireXpert Series



## CABLE CERTIFIERS

## The WireXpert series - a certifier for all applications

The WireXpert series is a family of extremely versatile cable certifiers which make it possible to certify cabling systems with the highest standards. The modular concept and the unique licensing system make it possible to adapt the WireXpert to your exact requirements and budget. Low-cost entry with the WireXpert 500 and later upgrades are just as viable as direct entry with the premium WireXpert 4500 model. The devices in the WireXpert series are versatile and suitable for use in office environments, industrial settings, laboratories and data centers.

### THE WIREXPERT SERIES - THREE MODELS TO CHOOSE FROM

#### WireXpert 500

The affordable model for entry into the world of measuring devices from WireXpert

- Two models available:
  - WireXpert 500 (copper - measurements up to Cat 6A, 500 MHz)
  - WireXpert Fiber Only (fiber optic measurements)
- Upgradeable for fiber optic or copper measurements (up to Cat 8)

#### WireXpert 500-PLUS

The combi model of the WireXpert series

- For copper measurements (Cat 6A) and fiber optic measurements
- Upgradeable to Cat 8

#### WireXpert 4500

The flagship of the WireXpert series

- For fiber optic and copper measurements up to Cat 8





## DUAL CONTROL SYSTEM (DCS™) - PRACTICAL AND EVERYTHING IN VIEW

All devices of the WireXpert series are characterized by the unique dual control system, meaning both the local and the remote devices are equipped a large colored LCD screen.

On the one hand, this makes series of measurements, whether alone or in a team, more efficient and transit times are considerably reduced. On the other hand, the dual control system makes troubleshooting on the remote device easier.

## MANUFACTURER APPROVALS

Leading cable and component manufacturers have tested the WireXpert series intensively and approved it for acceptance measurements. Measurements by independent test laboratories (such as ETL) confirm the accuracy of the measurements of the WireXpert series.

## MOVING SAFELY INTO THE FUTURE



⤴ UPGRADE ⤴



⤴ UPGRADE ⤴



## HIGHLIGHTS

- Versatile measuring device series for certifications up to 2500 MHz
- For all standards: Class D/E/E<sub>A</sub>/F/F<sub>A</sub>, Cat 5/5e/6/6A and new standards Cat 8 (TIA) and Class I & II (ISO)
- Recommended by cable manufacturers worldwide
- All important measurement modules available: patch cord, industrial Ethernet, coax, fiber optic
- Support in advanced certification for fiber optic cables at 850/1300 nm (multimode) and 1310/1550 nm (singlemode)
- PC software eXport for easy generation of extensive reports and documentation
- Optional RJ45 permanent link measurement cords with exchangeable tips

## Areas of application

### PREMISE WIRING

#### Cat 5 - 7A

Support of all measurement methods on permanent link, channel and MPTL from Cat 5 to Class F<sub>A</sub>.  
For power users with a high number of tests cost-optimized measurement cords with field replaceable RJ45 tips are available.



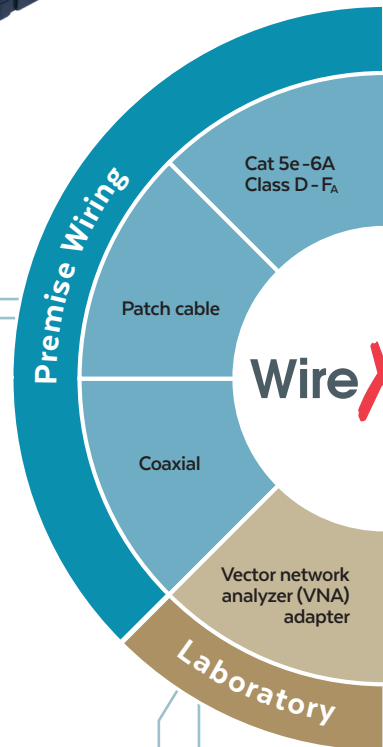
#### Copper patch cable tests

Fast and efficient classification and documentation of the performance of patch cables Certification via a quick "dual-end test".



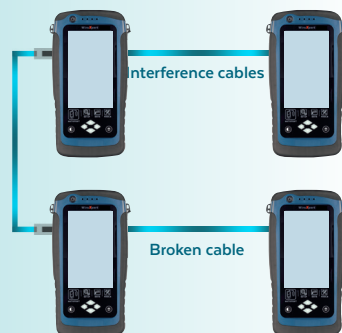
#### Coaxial cable test

Support in examination of coaxial cables with test adapters such as damping and return loss in a broad frequency range.



### ALIEN CROSTALK

Alien crosstalk is tested with two WireXpert 4500-sets. You do not need any special adapters and no additional equipment such as laptops or other devices to carry out corresponding data analysis in the field.



### LABORATORY TESTS OF CABLES AND COMPONENTS

Due to its outstanding measurement accuracy, the WireXpert 4500 with the VNA adapter is the perfect supplement to expensive network vector analyzers in the laboratory.

Component manufacturers use the WireXpert 4500 for measurements from 1 - 2500 MHz.



## BACKBONE

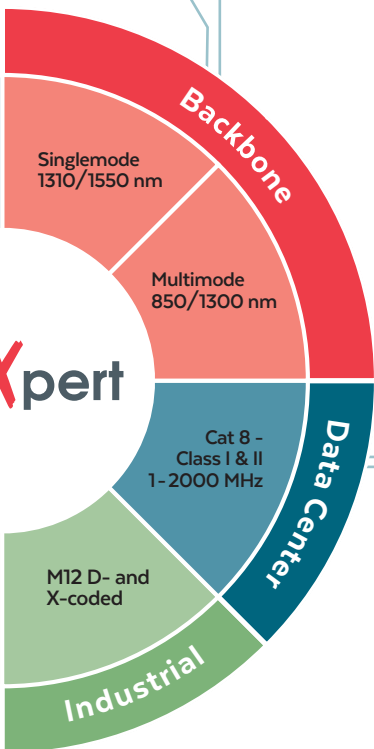
### Singlemode kit

The WireXpert singlemode measuring adapters are suitable for acceptance measurements at 1310 and 1550 nm according to valid standards.



### Multimode kit

WireXpert multimode measurement adapters comply with the applicable standards for acceptance measurements on fiber optic cabling with 850 and 1300 nm. The light sources of the adapters comply with Encircled Flux specifications.



## DATA CENTER

All cabling systems for the fastest applications up to 40 Gbit/s in data centers are covered by optional adapters for Cat 8, Class I and II, TERA, GG45, ARJ45 and MMCPRO. Multimode and singlemode adapters are available for fiber optic cabling in data centers (see Backbone application area).

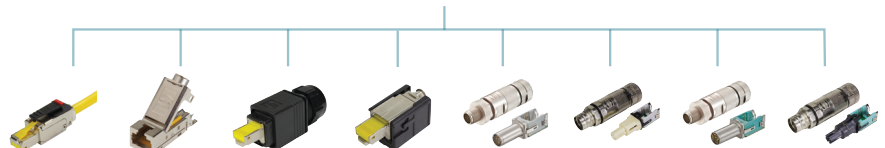


## INDUSTRIAL ETHERNET CABLING

Appropriate adapters are available for the certification of industrial Ethernet cabling. The special requirements of industrial Ethernet systems are supported in a wide variety of link configurations such as E2E and Profinet cabling.

With the WireXpert measuring cable, all pre-Link™ plugs and sockets available at Harting can be used. This means the M12 D- and X-coded systems as well as various industrial RJ45 variants and the Harting IX system can be connected.

Other measuring cables outside of the pre-Link family, such as M8, are also available.



## Project management and more

### HIGHLIGHTS

- **eXport Cloud Enterprise:** the cloud on your own network for the secure exchange of measurement data
- **List-based testing:** for the uniform designation of cable routes
- **eXport software:** central administration of measurement results including report generation and complete documentation

### EXPORT CLOUD ENTERPRISE

eXport Cloud Enterprise makes it possible to operate your own cloud-based platform and use it to exchange measurement data and measurement lists. Project managers can use it to receive measurement data over the Internet from various installation teams and control measurement projects using LBT (list based testing) files.

This solution makes users completely independent of third-party cloud services as the server software is operated on its own IT infrastructure. The user is in possession of the data at all times since it does not have to be stored on third-party servers.

There are no monthly costs as well SaaS (Software as a Service) products, since eXport Cloud Enterprise is installed directly on your own company network. All measurement data is stored on your own network. Any number of WireXpert devices can be connected to the cloud. The cloud can be used with any WireXpert device.

### VERSATILE DATA MANAGEMENT SOFTWARE - EXPORT

The eXport reporting software offers central administration of measurement results for copper and fiber optic lines. Measurement data can be imported quickly from the measuring device using the software. A compressed data format results in small file sizes without loss of detail and allows very fast data exchange. The reports can be output as PDF and CSV files. The additional import option for OTDR results (Bellcore format) means that all results required in a cabling project can be centrally documented.

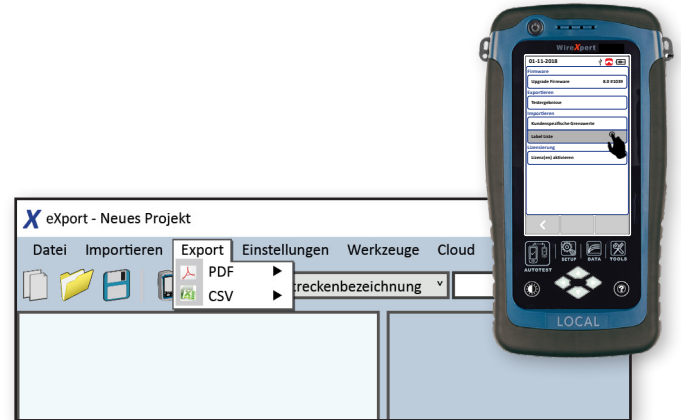
Functions such as list-based testing with pre-defined task lists and recertification of existing measurement results enable comprehensive project preparation and follow-up.



### LIST BASED TESTING (LBT)

LBT is a tailor-made labeling system for hierarchical cable routes. LBT changes the certification process. Route lists are created directly on the PC using the eXport software and sent to WireXpert via USB or the cloud. The lists are displayed on WireXpert. The user can access these lists directly during the measurement and select the corresponding route.

LBT is ideal for project managers who have a preference for how cable routes should be designated.



## Which model is right for you?

	WireXpert 500	WireXpert 500 Fiber only	WireXpert 500-PLUS	WireXpert 4500
	WireXpert 500	WireXpert 500-MMEF WireXpert 500-SM WireXpert 500-QU	WireXpert 500-PLUS	WireXpert 4500
Application/Medium	CU	FO	CU FO	CU FO
Frequency range	500 MHz upgradeable to 2500 MHz			2500 MHz
Category/Class	Cat 6A/Class E <sub>A</sub>		Cat 6A/Class E <sub>A</sub>	Cat 8/Class I & II
Dual control system (DCS™)	✓	✓	✓	✓
Compatible with digital fiber optic video microscope		✓	✓	✓
<b>Copper test and measurement parameters</b>				
Wiring diagram	✓		✓	✓
Length	✓		✓	✓
Tone generator	✓		✓	✓
HF measurements (NEXT, insertion loss, return loss ...)	✓		✓	✓
Duration, delay time, resistance	✓		✓	✓
<b>Fiber optic test and measurement parameters</b>				
Wavelength		850 nm - 1300 nm	1310 nm - 1550 nm	
Length		✓	✓	✓
Damping		✓	✓	✓
<b>Documentation</b>				
eXport PC evaluation software	✓	✓	✓	✓

**ASIA-PACIFIC**

Softing Singapore Pte. Ltd.  
73 Science Park Drive,  
Singapore Science Park 1,  
#02-12/13 Cintech I,  
Singapore 118254

+65 6569 6019  
asia-sales.itnetworks@softing.com

Find your local distributor:  
[itnetworks.softing.com/contact](https://itnetworks.softing.com/contact)

[itnetworks.softing.com](https://itnetworks.softing.com)

For more information, please contact:

©2020 Softing Singapore Pte. Ltd. In line with our policy of continuous improvement and enhancement, product specifications are subject to change without notice. Subject to changes and errors. All rights reserved. Softing and the Softing logo are trademarks of Softing AG. WireXpert and the WireXpert Logo are trademarks of Softing Singapore Pte. Ltd. All other cited trademarks, product and company names or logos are the sole property of their respective owners.